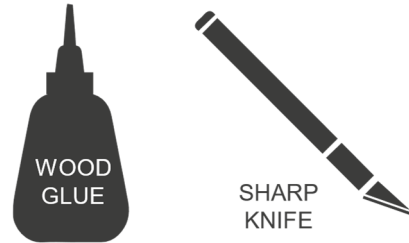


## Eldritch Horror assembly instructions.

You will Need.



### Parts

The Insert is composed of several detachable boards.

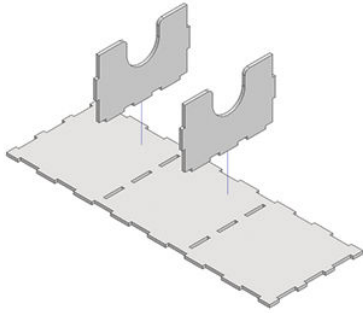
To detach the parts please press gently but firmly on the pieces with an inwards motion, if the parts do not detach easily then use a sharp knife to carefully cut along the edges of the piece.

### Parts and Modules Assembly

Warning: Use preferencialy PVA glue on all wood to wood contact surfaces.

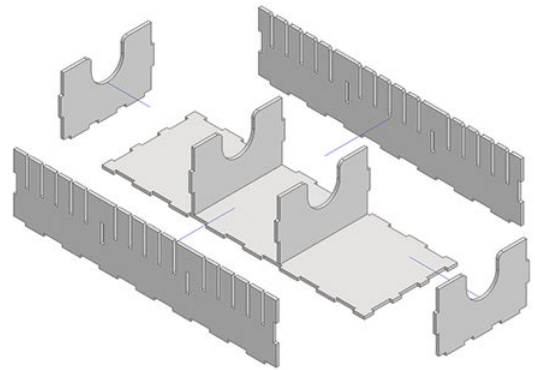
**A**

**Step 1**



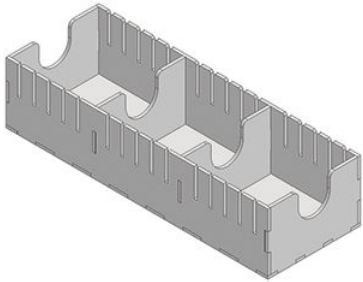
**A**

**Step 2**



**A**

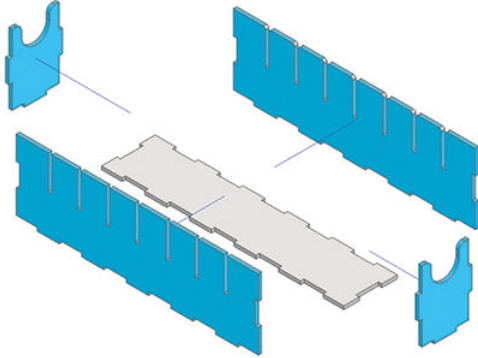
**Step 3**





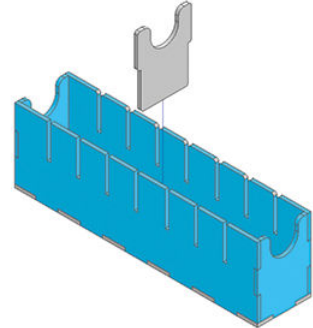
**B**

**Step 1**



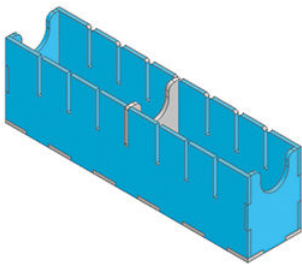
**B**

**Step 2**

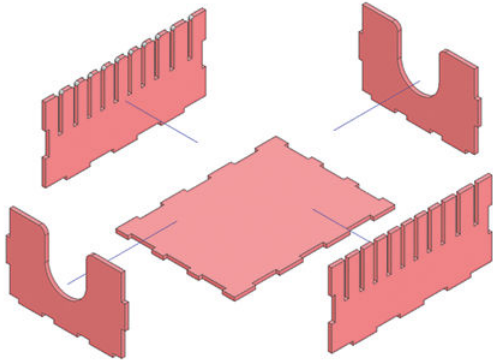


**B**

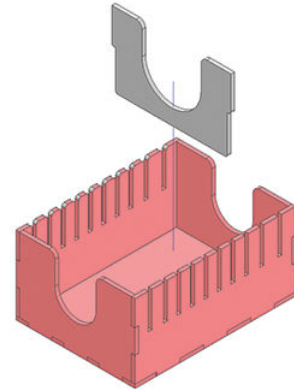
**Step 3**



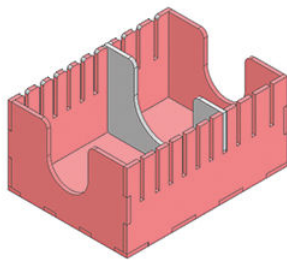
**C** Step 1



**C** Step 2

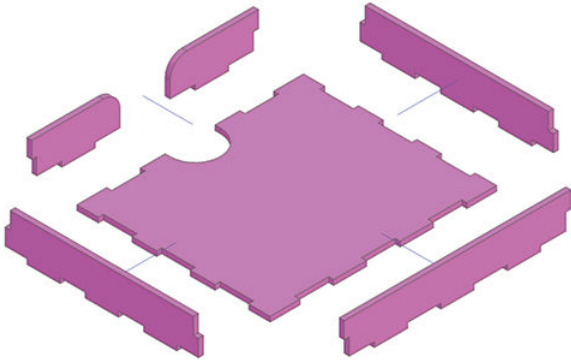


**C** Step 3



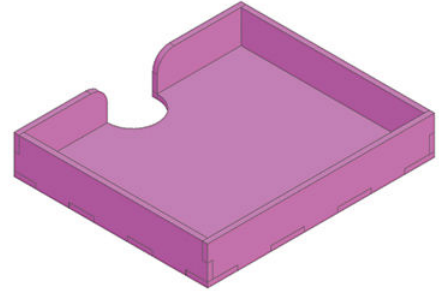
D

Step 1



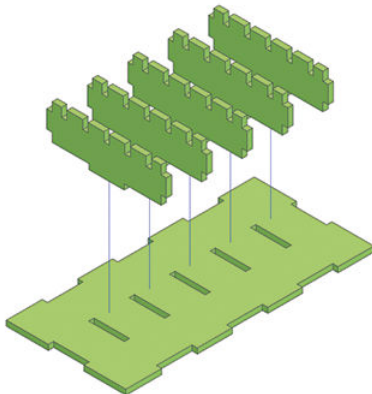
D

Step 2



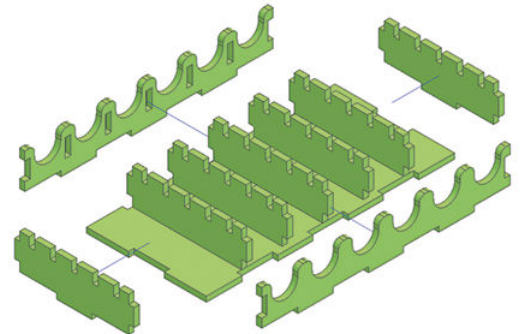
E

Step 1



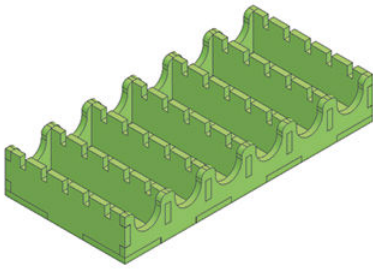
E

Step 2



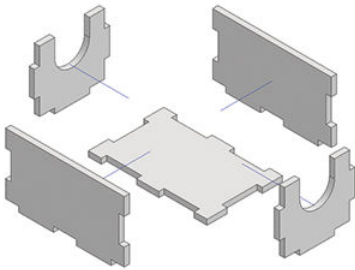
**E**

**Step 3**



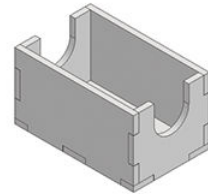
**F**

**Step 1**



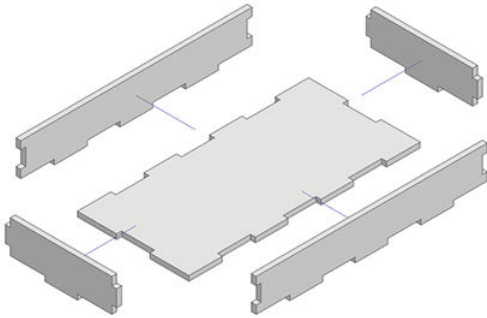
**F**

**Step 2**



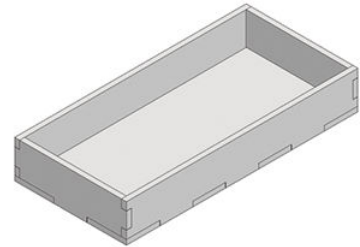
**G**

**Step 1**



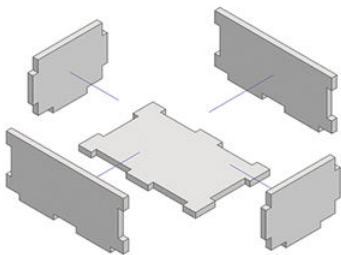
**G**

**Step 2**



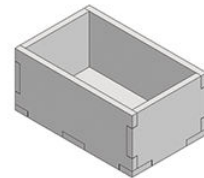
**H**

**Step 1**



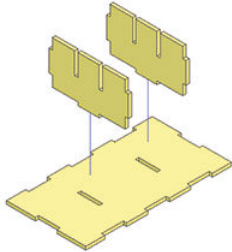
**H**

**Step 2**



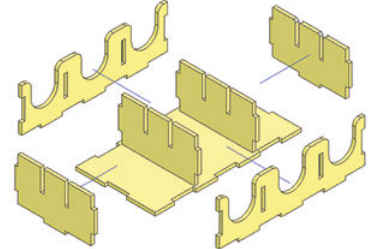
I

Step 1



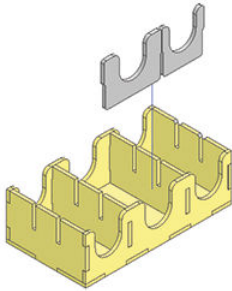
I

Step 2



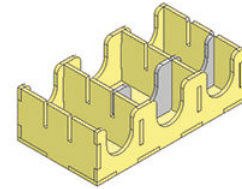
I

Step 3



I

Step 4

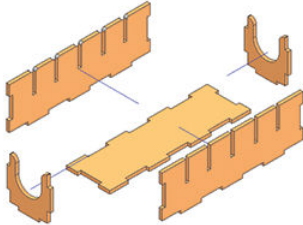






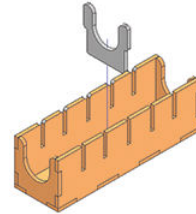
J

Step 1



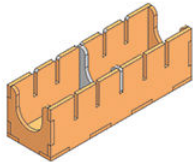
J

Step 2



J

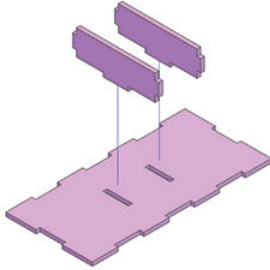
Step 3





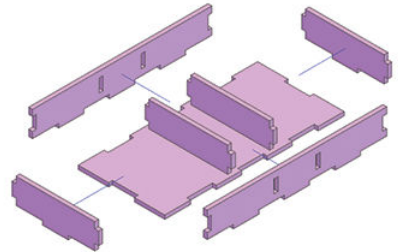
L

**Step 1**



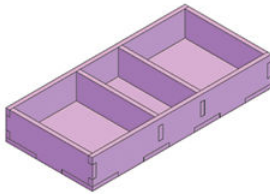
L

**Step 2**



L

**Step 3**



### Inbox Storage and order

Place all boards in the bottom of the Box. Pile Up the parts like the Pictures to store the game.

